

HYDRAULIC DOCK LEVELER

Nominal Dimensions

Width	Length
6' (1830 mm)	8' (2440 mm)
6' (1830 mm)	10' (3050 mm)
7' (2100 mm)	8' (2440 mm)
7' (2100 mm)	10' (3050 mm)

Electrical

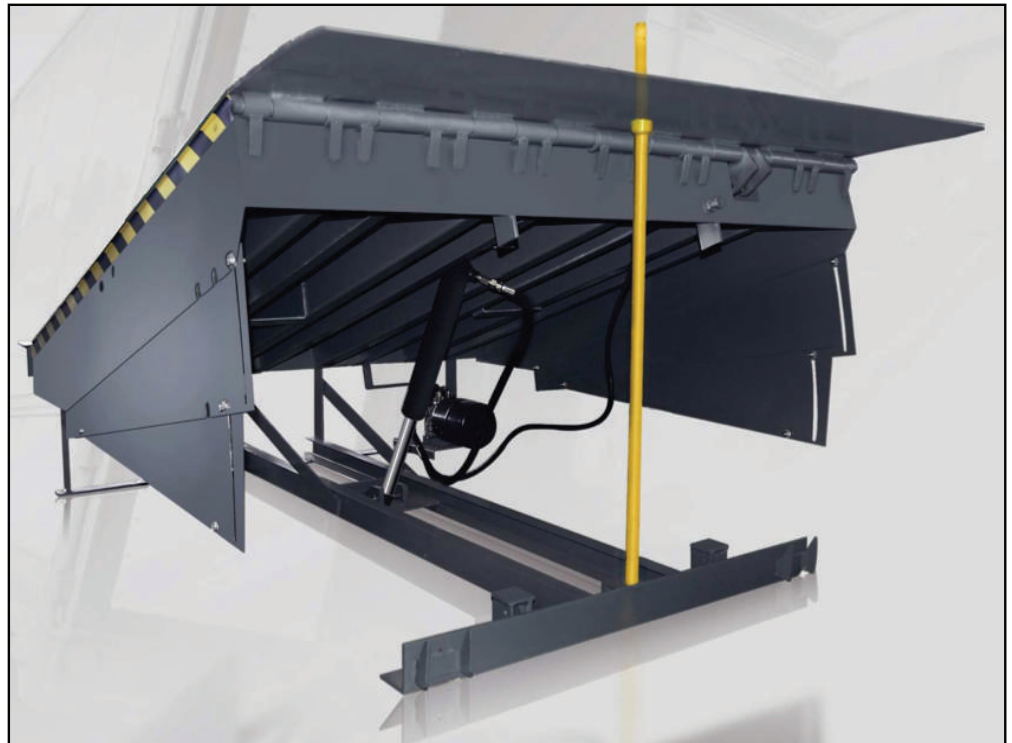
- ▶ The 1 Hp motor is rated at 380/415V, three phase, 50Hz.

Standard Features

- ▶ Three Phase / 380 Volt 50 Hz Power
- ▶ Automatic Night Locks
- ▶ Full Range Toeguards
- ▶ Hydraulic Lip Cylinder
- ▶ Maintenance Strut
- ▶ Wall Mount Control Box
- ▶ Unitized Pump and Motor
- ▶ Moulded FL410-10 Bumpers
- ▶ Easy Clean Style Subframe
- ▶ 400 mm Lip
- ▶ Enclosed Tubular Hinge Pin
- ▶ Color Black

Warranty

- ▶ Fastlink warrants all components to be free of defects in material and workmanship, under normal use, for a one-year period from date of shipment.



SMOOTHEST TRANSITION IN THE INDUSTRY.



From the rear hinge to the front hinge - featuring a consistent, reliable lip crown - Fastlink dock levelers provide the smoothest transitions between dock, leveler and trailer to help prevent injuries, and minimize forklift and product damage.



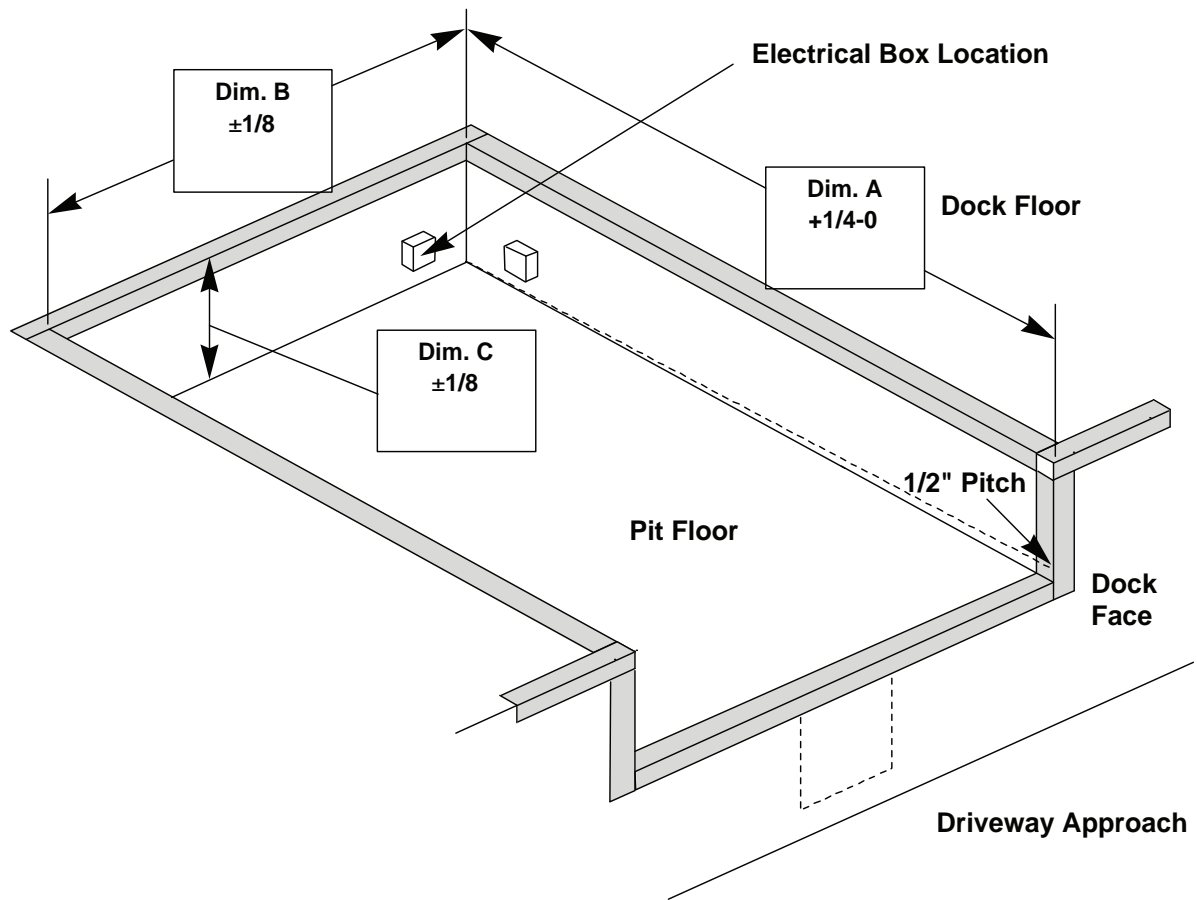
MASTER GLOBAL (HQ)

Tel: 019-3851633

Fax: 03-61377086

Email : sales@masterglobal.com.my

Website: www.masterglobal.com.my



NOMINAL PIT SIZES (W x L)	6' x 6'	6' x 7'	8' x 6'	8' x 7'
PIT LENGTH DIM A	63"	63"	87"	87"
PIT WIDTH DIM B	74"	85"	74"	85"
PIT DEPTH DIM C	19-1/2"	19-1/2"	19-1/2"	19-1/2"

CUSTOMER: _____ JOB: _____ LOCATION: _____ SIZE: _____	CERTIFIED FOR CONSTRUCTION
	BY: _____
	DATE: _____
	COMPANY: _____
	CITY & STATE: _____